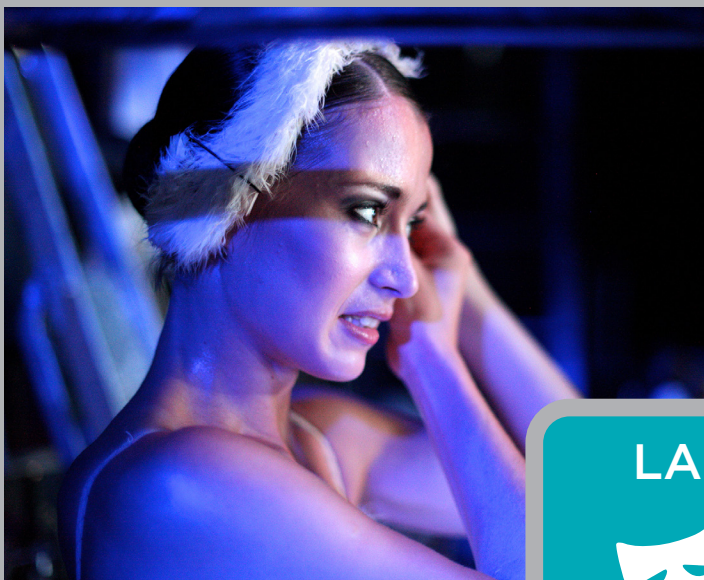


# VARI\*LITE

## LARGE THEATRE

### Application Guide





# Large Theatre

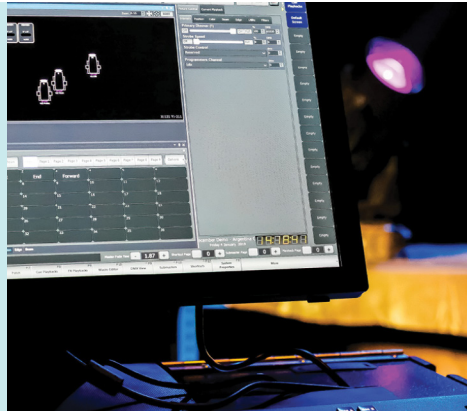


- High end theatrical space
- 1000+ seats
- National theatres and professional performance
- Large touring and in-house productions
- Balconies, box seating, and orchestra pits
- Professional lighting designers and operators

# Challenge

# Solution

Large theatres are home to some of the top performances in the world, and the lighting should be just as high quality. With a focus on perfect reproduction of skin tone, costumes, and set pieces, white and colored light must be excellent.



With our lighting solutions, large theatres can bring an adaptable visual experience perfect for any production. From theatrical luminaires like the VL600 Acclaim Series to moving heads like the VL1600 Profile and VL5LED Wash, our fixtures offer beautiful color rendering and professional features.

The sophisticated productions in these spaces often use rental fixtures, but the facility needs a quality house system as well. As such, the system should have the power and data distribution capabilities to handle both the in-house and rental equipment.



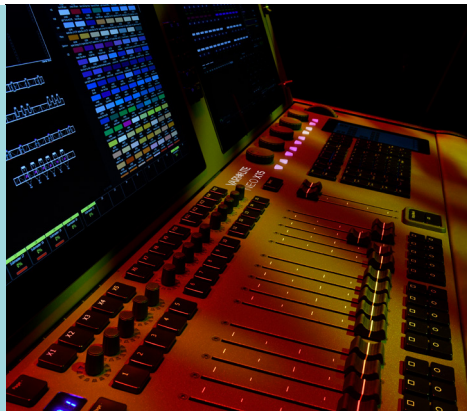
With our customizable power control solutions, large theatres can meet the needs of a variety of fixtures. For more control in more locations in the venue, Networking Nodes can connect your entire solution sACN or Art-Net, ensuring you have control where you need it —with less cost.

To meet the varied requirements of productions and events in these spaces, large theatres need a diverse set of theatrical fixtures along with full featured moving head luminaires that can be used to bring effects and illuminate many different areas of the stage during a production.



Vari-Lite's VL600 Series provide more capabilities from less fixtures, increasing versatility, while the VL1600 Profile's Vari\*frost variable frost and VL\*FX theatrical animation wheel deliver the perfect look for every moment.

Productions in a large theatre are designed and run by professionals who need the ability to deliver the perfect look every time. To do this, the lighting console should have capabilities that open up creative opportunities for any theatrical, musical, or other event.

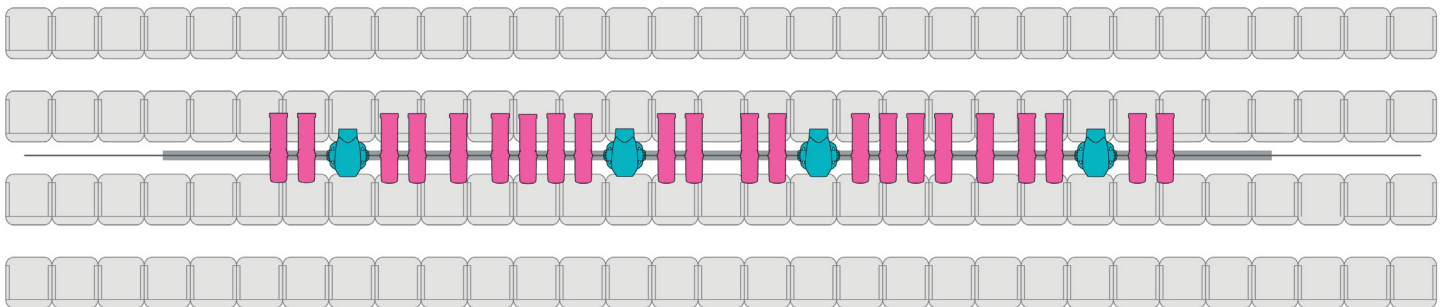
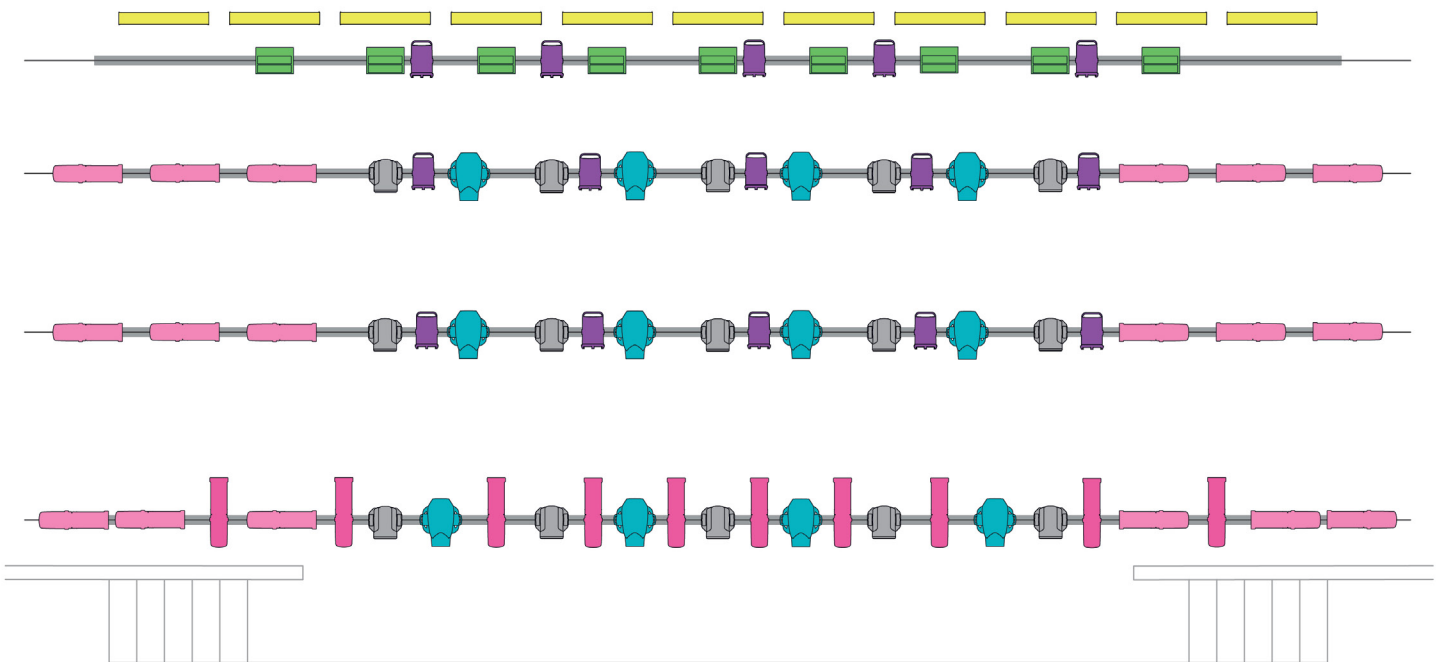


The Neo X15 is Vari-Lite's flagship, high-performance lighting console designed for large facilities, and helps designers find the perfect look in less time with an advanced effects engine that supports pixel mapping, media playback, timelines, and more.



# LUMINAIRES

- **VL1600 Profile (x 16)** - precision high-output profile luminaire designed for theatre and studio.
- **VL5LED Wash (x 15)** - moving wash with high CRI, wide color spectrum, and adjustable diffusion.
- **VL600 Acclaim PLE, RGBL (x 18)** - professional-grade theatrical profile with wide color spectrum and high CRI.
- **VL600 Acclaim PLE WW (x 32)** - theatrical profile with high output and fixed warm white source.
- **VL600 Acclaim Fresnel (x 15)** - professional LED wash with wide color spectrum and high CRI.
- **Coda Cyc (x 9)** - seamless coverage for your cyclorama with high CRI and split-color control.
- **Aurora Strip 12 (x 9)** - high output professional theatrical strip fixture with rich color mixing.



# CONNECTIVITY (120V)

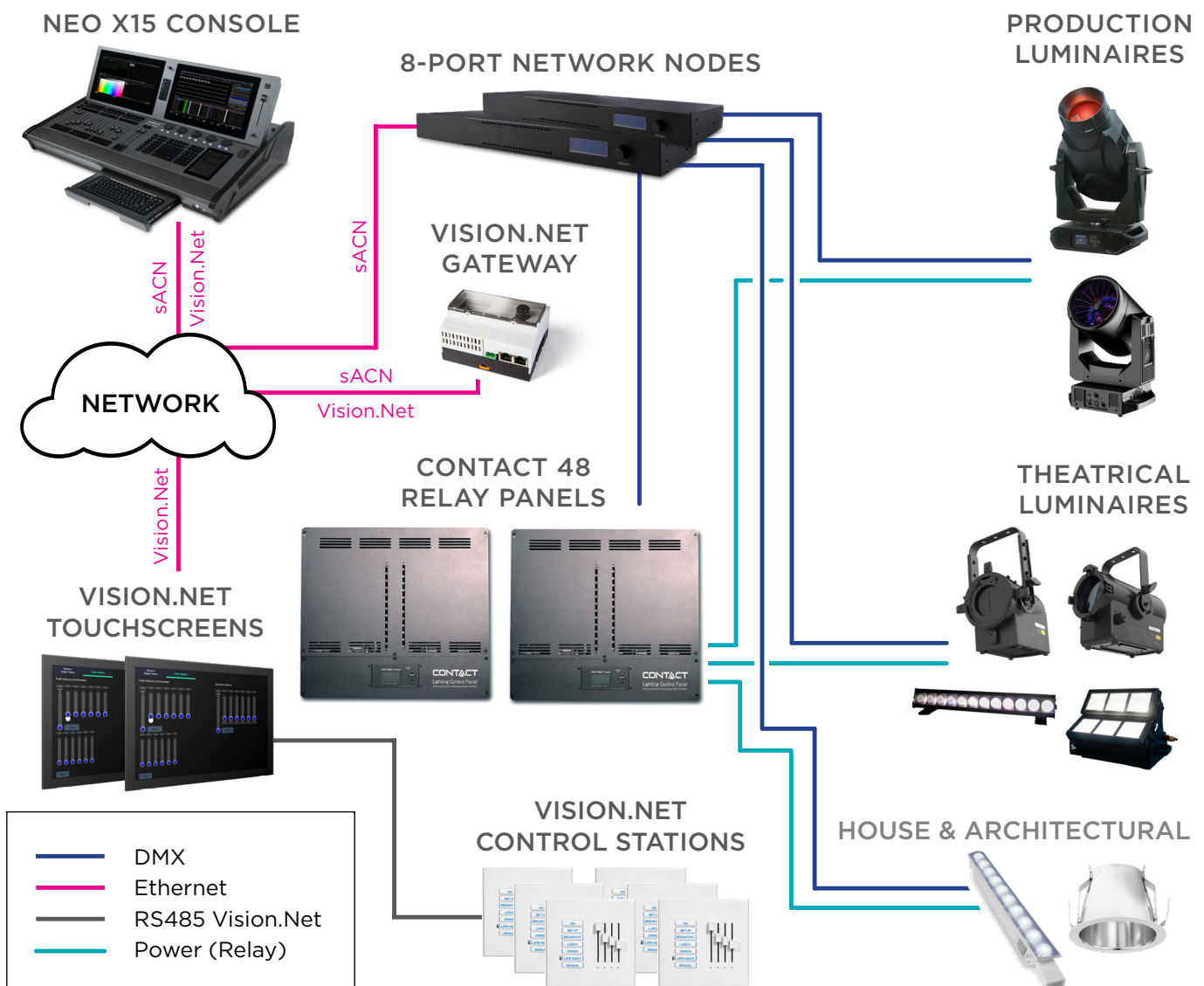
**Neo X15 Console (x 1)** - high-performance lighting console designed for large facilities.

**Vision.Net 10.1" Touchscreen (x 2)** - touch-based panel to control a lighting system.

**Vision.Net Control Station (x 6)** - simple interface for controlling lights during simple events.

**Networking Node 8 (x 2)** - configurable 8-port node for DMX-over-IP and Vision.Net bridging.

**Contact 48 (x 2) Relay Panel** - modular panel providing relay-controlled 120V power to fixtures.



# CONNECTIVITY (230V)

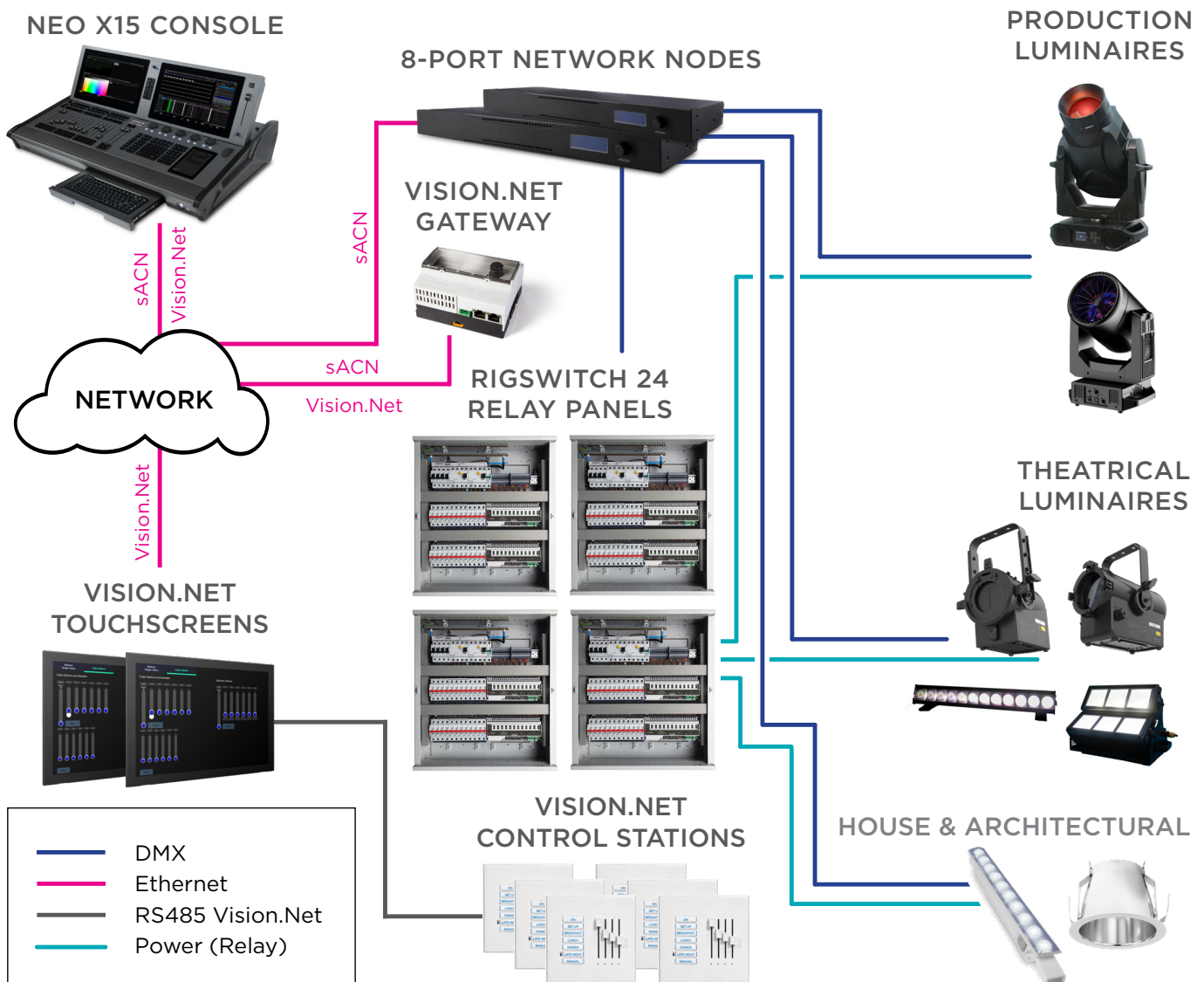
**Neo X15 Console (x 1)** - high-performance lighting console designed for large facilities.

**Vision.Net 10.1" Touchscreen (x 2)** - touch-based panel to control a lighting system.

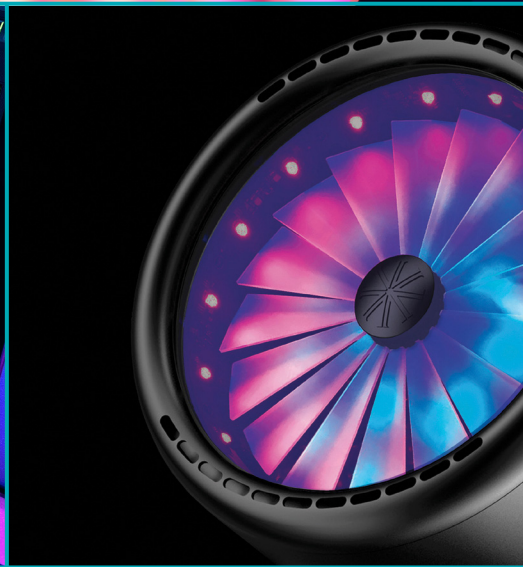
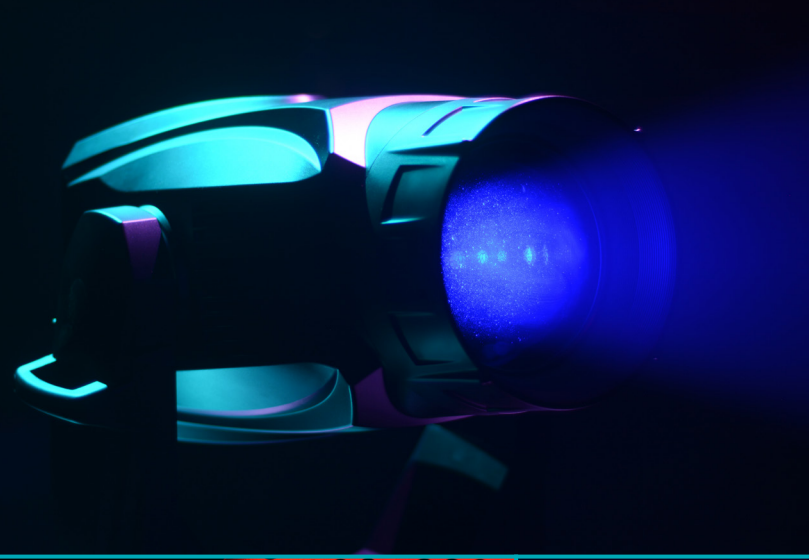
**Vision.Net Control Station (x 6)** - simple interface for controlling lights during simple events.

**Networking Node 8 (x 2)** - configurable 8-port node for DMX-over-IP and Vision.Net bridging.

**RigSwitch 24 Relay Panel (x 4)** - modular panel providing relay-controlled 230V power to fixtures.







# VARI\***LITE**

©2024 Signify Holding. All rights reserved. All trademarks are owned by Signify Holding or their respective owners. The information provided herein is subject to change, without notice. Signify does not give any representation or warranty as to the accuracy or completeness of the information included herein and shall not be liable for any action in reliance thereon. The information presented in this document is not intended as any commercial offer and does not form part of any quotation or contract, unless otherwise agreed by Signify. Data subject to change.

VARI-LITE

[www.vari-lite.com](http://www.vari-lite.com)

March 27, 2024